

Oval Profile Mortice

Oval Profile Mortice Sash Lock

2241/L2241

Application:

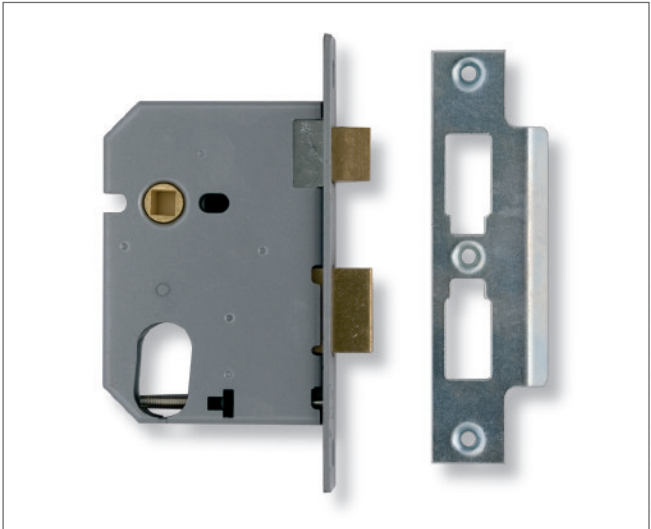
- For timber doors hinged on the left or right
- Also suitable for steel & composite doors - special fixings required

Operation:

- Deadbolt is locked or unlocked by oval cylinder
- Latch bolt withdrawn by lever handle
- Pierced to accept bolt through furniture
- 2241 supplied with 2X13 cylinder

Specification:

Reference	L2241 (lock case & strike plate)
Case Size	65mm (2.5"), 77.5mm (3") or 103mm (4")
Backset	44.5mm, 57mm or 82.5mm
Case	Steel, silver powder coat
Outer Forend	Stainless steel or brass
Striking Plate	Finished to match forend
Deadbolt	Brass with hardened steel rollers
Latch Bolt	Brass, reversible
Follower	Brass, 8mm square
Rebate Kit	2979 (13mm, 19mm or 25mm)
Cylinder Type	2241 supplied with 2X13 L2241 oval profile (not supplied)



Finishes:

- SC - Satin Chrome finish
- PL - Polished Brass finish

Standards:



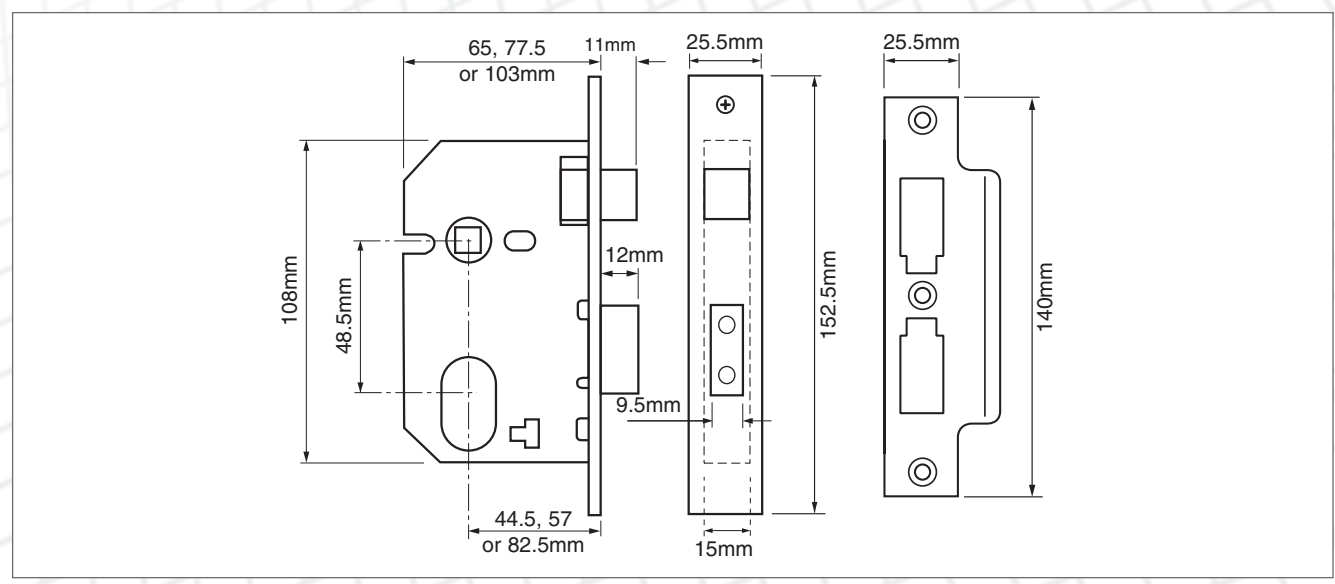
- EN 1634-1 assessed for use on 60 minutes timber fire doors

Ordering Code Example:

J L2241 - PL - 2.50 (case & strike plate only)
 J 2241 - PL - 2.50 (complete with 2X13 cylinder)
 (Boxed - Product Code - Finish - Case Size)

Features:

- Modular case range
- Reversible latch bolt
- Available with square forend and striking plate



2E Oval Profile Mortice