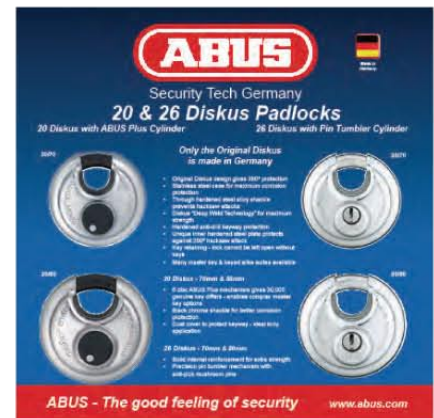


20/70mm & 80mm Diskus 'Plus' Mechanism

- Black chrome shackle : Best corrosion resistance
- Through hardened steel alloy shackle : Resists saw attacks
- Diskus "Deep Weld Technology" : Maximum case strength
- Anti-cut plate : Genuine 360° lock protection
- Fitted anti dust cap : Prevents cylinder damage
- ABUS 'Plus' disk cylinder : Resists drill, pull & manipulation attacks
- 30,000 manufactured key differs, each lock supplied with key code card : Offers numerous keyed alike (KA) or master keyed (MK) options or further locks made up to same key as per card provided



ABUS 'Plus' key card supplied with all 20 Diskus padlocks





Informative illustrated Point of Sale aluminium display boards available. See page 74/75 for full details



20/70 Diskus Padlock

20/80 Diskus Padlock

ABUS UK Reference / Description	ABUS Barcode	ABUS Code	 mm	 mm	ABUS GPS	Weight Kg	Box Qty	RRP ex VAT
20/70 C	4003318 32164 1	32164	71 / 71 / 30	20 / 17 / 10	9	0.357	3	£ 39.02
20/80 C	4003318 32165 8	32165	81 / 81 / 35	25 / 18 / 11	9	0.472	3	£ 45.77
20/70	4003318 08854 4	08854	71 / 71 / 30	20 / 17 / 10	9	0.337	6	£ 39.02
20/80	4003318 08798 1	08798	81 / 81 / 35	25 / 18 / 11	9	0.452	3	£ 45.77
Key Blank - for 20/70+80 & all locks with Plus mechanism	4003318 05078 7	05078				0.010	50	£ 3.14
Cut Key - for 20/70+80 & all locks with Plus mechanism	4003318 06227 8	06227				0.009	1	£ 6.10
Master Key- for 20/70+80 & all locks with Plus mechanism		04325				0.009	1	£ 13.74

ABUS 20 KA/MK Suites

For security reasons ABUS do not publish KA & MK suite reference numbers
 20 padlocks are available to order in numerous KA suites at 10% surcharge to prices shown above
 Additional 20 padlocks (inc. all 'Plus' 37, 20 & 88 Series in KD, KA or MK) can be made to existing key codes :
 All 20s made to order or master keyed at £9.00 surcharge to "C" prices shown above